

EVERYDAY FENG SHUI

Feng Shui by Maria

May Column 2021

Harness Your Vital Energy – Feng Shui Anchoring Guidelines

” Positive energy is meant to give people confidence and hope, encourage people to love others and life, as well as to pursue good things. Everything we do is ultimately for the sake of spreading positive energy.” Lu Wei

How wonderful to be surrounded by positive energy! Who would not want to wake up feeling positive and energized every day? There is a way; through Feng Shui your environment can surround you with the energy you need to nourish you on a daily basis.

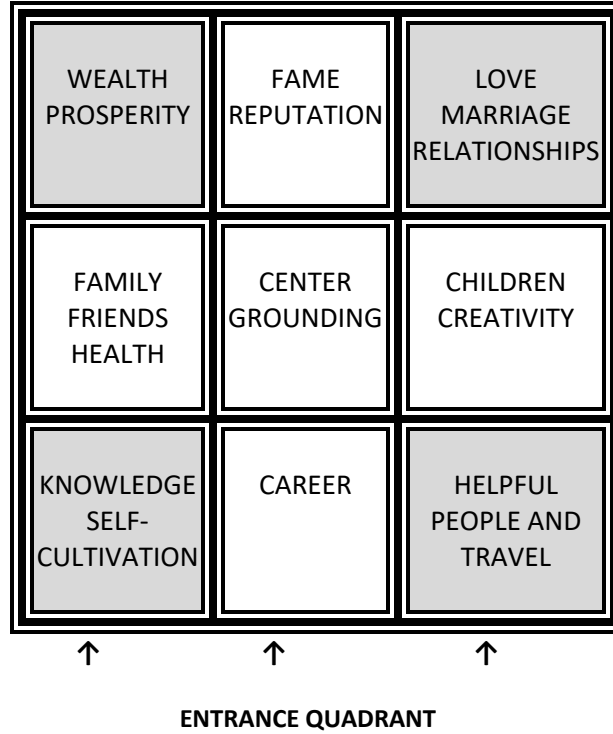
Last month my column stressed the importance of mapping your home’s Bagua to help you identify the location of each of the nine treasures of your life.

We want to ensure that our home is working with us to keep us energized, harmonious, and blessed. The ideal shape for a house in Feng Shui is a square or rectangle. This means that all areas of your home are contained within the Bagua, and that the vital energy, “Ch’i,” can circulate to all areas of your life. Yet over 90% of western homes are not perfectly rectangular. What is the shape of the footprint of your home? What areas of your home are missing? How does this affect your life? When areas in your home are missing from the Bagua, they could potentially also be missing from your life.

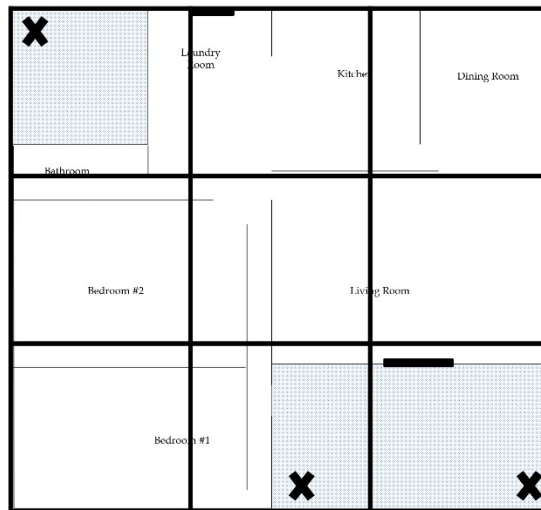
Anchoring the Bagua:

The Feng Shui Bagua Map, represented as a grid of nine sectors, is known as a treasure map helping you locate specific energies in your home. When there are Bagua areas outside of the physical structure of your home or business, it’s important to anchor and enhance them in some way, so that those areas are not missing from your life.

This grid is intended to be superimposed over the floor plan of your home. The home’s main entrance is always mostly always located at the bottom of the grid, (in the Knowledge, Career, or Helpful people sector). Stand facing the front entrance of the building as if you were about to step inside. This is called the “Mouth of Ch’i” and will be your vantage point for determining the orientation of the Bagua map for your entire home. Once you have identified where your entrance falls in relation to the map, you can identify where the remaining areas of your environment fall. Now your home can begin to tell the story and shed some light on issues you may be facing in your life.



To begin, locate the four corners of your home. Are any missing from the rectangle of the Bagua? If so use the following enhancements to either structurally or symbolically anchor the exact location of the missing corner. Walk the outside of your property until you are standing at the spot where the two walls would have met, then use one or more of the following anchoring cures.



Anchoring Missing Bagua Areas:

- 1) Structurally – You can literally complete the missing area with a structure such as a room addition, a porch, adding a deck, arbor, trellis, etc. if the structure has enough substance to be considered part of the building.
- 2) Symbolically - You can also complete the missing area by placing a symbolic addition; something that defines the missing area. You can do this by locating the exact corner and placing a large item there representing the Bagua area (examples such as, but not limited to):
 - Wealth – Fountain, purple gazing ball, purple leaf tree
 - Love – Two seat bistro set, large red flowering plant, red gazing ball
 - Helpful People – Boulder, sculpture, white metal seating, silver gazing ball
 - Knowledge – Large tree, statue, blue or green gazing ball, wooden seating
- 3) If there is no room for a symbolic addition, you can locate the missing corner and do one of the following:
 - On lawn – Bury a quartz crystal with its point up at the specified corner (also use inside anchoring)
 - On cement – Mark the exact corner with a small symbol such as a heart, tree, circle, or triangle (also use inside anchoring)
- 4) Inside Anchoring – Mirroring the indented walls closest to the missing Bagua area will make the indentation seem to disappear and enhance the circulation of Ch'i within the missing area. This can also be done by hanging a 30 mm round faceted crystal in front of a window in the indented wall. Use art and personal enhancements representing the Bagua area in this indented area to further enhance the Ch'i.
(picture)
- 5) Enhance the Area in Every Room – Missing home areas make it important to enhance that location in every room. For instance, if the Love area is missing from your home, and you want to increase romance, place the Bagua at the entrance of each room, (this may not be facing the same direction as the front door of your house) locate the love corner, and place something red, a pair of items, a picture of a couple or a representation of romance in each of the back right corners.

Enhancements for Anchoring Missing Corners and Center Side Areas

Sometimes houses have missing areas on the sides, back or front as well as corners. The goal is to anchor or complete the missing area with something significant that is in harmony with your home. Whenever you can choose items and designs that relate to the Bagua area you are working with. For example:

CAREER – Front Center – Anchor with water features such as fountains, waterfalls, red plants, black shiny pots

KNOWLEDGE/SELF CULTIVATION - Left Front Corner – Anchor with a large tree, a garden or blue/green gazing ball, wood items, florals and stripes.

FAMILY/FRIENDS/HEALTH - Left Center - Anchor with wooden seating, and a flower garden of many beautiful colors/

WEALTH – Back Left Corner – Anchor with items that “call the Ch’i,” such as flags, whirligigs, and water features, purple or dark blue, and red tones.

FAME – Back Center – Anchor with red plants and bright lighting, BBQs, red seating, or cushions.

LOVE – Right Back Corner – Anchor with a red bistro set with two chairs, pairs of garden art representing romance or trees with red/pink flowers.

CHILDREN/CREATIVITY – Right Center – Anchor with metal seating, sculptures, whimsical garden art, or large rocks.

HELPFUL PEOPLE/TRAVEL– Right Front Corner – Anchor with sculptures of spiritual guides, large boulders, large round white or grey pots with white flowers or flowering trees, stone or metal sculptures, metal seating.

These are just a few suggestions. You can have fun discovering creative ways to enhance and anchor your home.

Affirmations when you’re anchoring a missing corner:

“The energy is staying within my home; prosperity is flowing my way.”

“I have captured the energy flowing into my love life, and am in a committed, loving relationship.”

Feng Shui at Work:

A client was remodeling a townhome located on an angular lot. She was very frustrated about the lack of synchronicity of her remodel. Materials were backordered, contractors were not showing up, estimates were coming in over budget. A quick mapping of her property showed that her Helpful People area was totally missing from the diagonal lot. We located the missing corner in her front lawn, and since it was not in a space where she could plant a tree or place a boulder, she immediately buried a large quartz crystal pointing up, with a positive affirmation. She also placed affirmations and natural crystals in the front right corner of every room in her house. The project took on a different energy and was completed soon after to her pleasure and satisfaction.

Another client had a cute cottage with an open cement front port in the Helpful People area. She anchored the edge of the patio with a large plant in a white, round pot. (Round and white are both representations of the Helpful People area) She was able to rent the property for a great price and buy a larger home for her family.

Your home represents the nurturing of all aspects of your life. Keeping the Ch'i within the confines of your home keeps you surrounded and nourished with the positive energy you need to thrive. Once you have anchored and enhanced the missing spaces, enjoy the benefits of a positive energy flow, and express your gratitude for all your blessings. Anchor your Bagua and enjoy the difference! The results can be magical!

* **Check out my BLOG** – Just go to the website and click on “Blog”: You can view many pictures and, I will respond to your questions quickly.

Until then...Blessings!

Maria McCullough is the owner / founder of *Feng Shui by Maria* (www.fengshuibymaria.com) and is a speaker and educator with over 20 years of experience. She specializes in residential, landscape and business consultations. She is a graduate of the Western School of Feng Shui and has personally trained with Terah Kathryn Collins, founder of the Western School of Feng Shui, specializing in Essential Feng Shui® and author of numerous books including “The Western Guide to Feng Shui.”